

---

**WEEKLY REPORT No. 016**  
**November 3<sup>rd</sup> to 6<sup>th</sup>, 2020**

**PROJECTS:**

**PO No. TPS 20-006 TERMOPUERTOSOLO 2 - BUENAVENTURA, TRANSMISSION LINE 115kV AND POWER ELECTRICAL SUBSTATION SE TABOR**

**PO No. TS1 20-009 TERMO SOLO 1 - PALMIRA, TRANSMISSION LINE 230kV AND POWER ELECTRICAL SUBSTATION SE SAN MARCOS**

## **1. PURPOSE**

The purpose of this document is to report to Client Upper Management the current weekly progress related with the projects:

- TERMO SOLO 2 BUENAVENTURA, TRANSMISSION LINE 115kV AND POWER ELECTRICAL SUBSTATION SE TABOR.
- TERMO SOLO 1 PALMIRA, TRANSMISSION LINE 230kV AND POWER ELECTRICAL SUBSTATION SE SAN MARCOS.

## **2. ABBREVIATIONS**

- TERMOPUERTO SOLO 2 – TS2
- POWER ELECTRICAL SUBSTATION TS2 – SE2
- POWER ELECTRICAL SUBSTATION TABOR 115kV, CELSIA EPSA TO RECEIVE TL2 – SE TABOR
- TERMO SOLO 1 – TS1
- POWER ELECTRICAL SUBSTATION TS1 – SE1
- POWER ELECTRICAL SUBSTATION SAN MARCOS 230kV, ISA TO RECEIVE TL1 – SE SAN MARCOS
- TRANSMISSION LINE 1 FROM TS1 TO SE SAN MARCOS – TL1
- TRANSMISSION LINE 2 FROM TS2 TO SE TABOR – TL2
- MOTA-ENGIL – ME
- SCOPE OF WORKS – SoW
- RFP PACKAGE No. CC03-AA-SOH-RFP-107-8003. POWER ELECTRICAL FOR 115 kV TRANSMISSION LINES AND ELECTRICAL SUBSTATIONS ENGINEERING, PROCUREMENT, CONSTRUCTION, INSTALLATION, COMMISSIONING, AND START-UP (EPCIC/S) SERVICES – RFP EPC 115kV
- RFP PACKAGE No. CC05-AA-SOH-RFP-107-8005. POWER ELECTRICAL FOR 230 kV TRANSMISSION LINES AND ELECTRICAL SUBSTATIONS ENGINEERING, PROCUREMENT, CONSTRUCTION, INSTALLATION, COMMISSIONING, AND START-UP (EPCIC/S) SERVICES – RFP EPC 230kV
- EPA - ESTABLECIMIENTO PUBLICO AMBIENTAL DE BUENAVENTURA.
- ISA – ISA INTERCOLOMBIA HIGH VOLTAGE NATIONAL TRANSMISSION SYSTEM OPERATOR.
- CC-SKC – CARTON COLOMBIA SMURFIT KAPPA COLOMBIA
- CON – CONCEJO NACIONAL DE OPERACIÓN
- DIAN – TAX GOBERMENT ENTITY. DIRECCION DE IMPUESTOS Y ADUANAS NACIONALES.
- LNTP – LIMITED NOTICE TO PROCEED.
- CVC – CORPORACIÓN AUTÓNOMA REGIONAL DEL VALLE DEL CAUCA
- GRB – GRUPO EMPRESA DE ENERGIA DE BOGOTA. OWNER PROJECT TL 500kV ALFEREZ – SAN MARCOS.

### **3. POINTS OF ATTENTION**

#### **3.1 XM AUDITS**

- The project should focus on the progress evidences to support the next XM audit on December 2020.
- TS1 and TS2. LPG fuel logistics infrastructure. Evidence of the progress with the Port LPG infrastructure should be demonstrated or an alternative option need to be considered in order to comply with the fuel audit requirement.

#### **3.2 EPC PORT CONTRACT ME**

- ME has not confirmed the submission date of the adjusted proposal.
- The ME EPICS Port Contract signature and the LNTP issued should be targeted by Nov 2020.

#### **3.3 TS2 – LT2 – SE2 – SE TABOR – BUENAVENTURA**

- Analyze strategy related with the “Giros Ordinarios” to keep the Power Plant and the Transmission Line 115kV in the current location.
- The EIA was submitted to EPA on Oct 19<sup>th</sup>. It is pending to receive payment instructions from EPA and SeaOne should be ready for payment confirmation.
- RFP EPC 115kV proposals pending to be received by the end of November 2020.
- On Nov 6<sup>th</sup>, ME confirmed they will not submit proposal for the RFP EPC 115kV and neither for the piling foundations.
- It is recommended to quote the piling foundations directly by SeaOne in order to not depend on one bidder. This was authorized by SeaOne on Nov 6<sup>th</sup>.
- The Wartsila EPC LNTP to be issued by Nov 2020.

#### **3.4 TS1 FACILITIES**

- On Nov 6<sup>th</sup>, ME confirmed they will submit proposal by the next week.
  - On Nov 6<sup>th</sup>, SeaOne authorize to prepare an RFP document. The contractors to be invited will be confirmed by SeaOne. Some suggested contractors could be:
    - Graña y Montero - Morelco
    - Sigdo Koppers – HL Ingenieros.
    - Teixeira Duarte
    - SK
    - Posco
    - Ismocol de Colombia
- RFP preparation will take at least 1 week and proposals from bidders will take at least 2 – 3 months.

- 
- If in the TL1 support LTS-1 it is recommended the piling foundation as a result of soil studies, it is possible that for the TS-1 facilities piling foundations could be required. Civil construction activities could be delayed, to avoid this, more piling machine construction equipment could be required with a higher costs.

### **3.5 TS1 – LT1 – SE1 – SE SAN MARCOS – YUMBO**

- EIA. The payment to ANLA was full executed during current week.
- EIA. The payment to CVC is pending.
- The EIA document has been closed but its submission to ANLA and CVC will happen by the next week considering the cloud server space in the ANLA IT system.
- On Nov 6<sup>th</sup>, ME confirmed they will not submit proposal for the RFP EPC 230kV.
- The RFP EPC 230kV. The other bidders' proposals to be received by November 2020.
- The Wartsila EPC Contract includes long lead items to be studied in detail in order to confirm its availability on time for the project.
- The project will cross the 500kV transmission line from Substation Alferéz (located at the south of Cali) to Substation San Marcos. Once defined the alignment it is important to have a meeting with GEB to analyze the coexistence of the project.
- It is suggested to visit each land owner and confirm with them the current estimated location of the towers or poles, this is in order to know their comments and confirm real affectations (an entrance, private road, water source, warehouses, etc.) not identified at the moment.
- The UPME submitted response about the Interconnection Study considering a conditional approval attached to:
  - Short circuit level increase in TermoYumbo 1 / 115kV / 40kA. Celsia.
  - Closing temporary disconnecter in SE Yumbo 220kV. ISA.
  - Commercial operation entrance of UPME 04-2014 – Refuerzo Suroccidental Project. GEB.

Considering these conditions, a regulatory and legal strategy should be implemented in order to demonstrate to XM that external conditions are not under control of SeaOne to comply with TS1 COD (Commercial Operation Date) (letters or communications to XM, UPME, CREG, Celsia, ISA and GEB).

- Considering the results of the first stage of the soil studies, piling foundations will be required for all the alignment of the TL1.

### **3.6 FREE TRADE ZONE AREA**

- For the Puerto Solo Port, Termo Puerto Solo TS-2 and Termo Solo 1 TS-1 Free Trade Zone Contracts (FTZC) it is required to perform some architectural drawings for the Power Plants and the offices / DIAN buildings. It is a requirement for contract signature process.
- The LNTP Exhibit to be issued to ME for each package should include this works.
- It is suggested to move forward with other contractor to develop this scope of work.

---

#### **4. CURRENT STATUS**

##### **4.1 EPC PORT CONTRACT MOTA-ENGIL**

- The adjusted proposal including wharf reduction 209x76 m2, tanks capacity increasing for TK1 and TK2 from 100KBBL to 110 KBBL, additional tanks for TKx=50KBBL biodiesel, TKy=50KBBL ethanol considering size of d 26.7m x h 14.25m and Flare relocation, has not been received up today.
- ME is pending to confirm the updated proposal submission date.

##### **4.2 WARTSILA EPC POWER PLANT**

###### **4.2.1 TS-2.**

- Interface Management. It is pending to receive the comments from ME for the interface excel file and to schedule the next meeting for discussion. The information received from Wartsila was submitted to ME Sep 11<sup>th</sup>.
- On Sep 22<sup>nd</sup>, Wartsila submitted the Updated layout, Dynamics load impact of the proposed engines and site handover document for the reception requirements of the power platform. This information was submitted on Oct01 to ME.  
No answer from ME was received during current week.
- On Sep 22<sup>nd</sup>, Wartsila also requested the following information:
  - The causeway and power plant platform are separate structures. Considering the exercise required for the heavy transport of engines, confirm if it is possible to drive from the causeway directly to the platform at desired location.
  - Full platform structural report. It has been submitted to Wartsila  
This information was submitted on Oct01 to ME.  
No answer from ME was received during current week.
- Long lead items need to be identified and the estimated date for supplies at site is required from Wartsila for:
  - Engines manufactured on Oct 2021 if NTP issued on Jan 2021.
  - Power electrical transformer 13.8/115kV.
  - Generator 13.8kV.
  - Gas vaporizer.
  - GIS Power Electrical Substation: Disconnectors, switchgear, current transformer, potential transformer, surge arrester and similar for 115kV.
- Exhibit 9. Performance guidelines to Wartsila to be agreed between SeaOne and Contractor considering the compliance in the performance test of the Acuerdo 1330 Colombian regulation requirements.

- 
- LNTP to be submitted to Wartsila considering preliminary works in engineering and project management documents.
  - On Nov 6<sup>th</sup>, Wartsila confirmed the power plant piling foundation is included in their scope of works.

#### **4.2.2 TS-1.**

- Once the interface list for TS-2 has been closed, the same exercise should be completed for TS-1.
- Long lead items need to be identified and the estimated date for supplies at site is required from Wartsila for:
  - Engines manufactured on Oct 2021 if NTP issued on Jan 2021.
  - Power electrical transformer 13.8/230kV.
  - Generator 13.8kV.
  - Gas vaporizer.
  - GIS Power Electrical Substation: Disconnectors, switchgear, current transformer, potential transformer, surge arrester and similar for 230kV.
- Piling foundations will be required as informed in the past report.

#### **4.3 O&M POWER PLANT CONTRACT**

- It is pending to request more information about O&M strategy with SeaOne.

#### **4.4 CQS - EASEMENT NEGOTIATION**

##### **4.4.1 TS-2.**

- TL2. Poles 1 to 7. No comments under control.
- TL2. Pole 6 to 7 permit over the El Piñal Bridge and Calle 6 to be obtained with INVIAS. This activity is scheduled to be executed during November, 2020.
- TL2. Pole 7 underground to SE Tabor. Easement permit for underground route to be obtained with INVIAS. This activity is scheduled to be executed during November, 2020.
- TL2 inside El Tabor Power Electrical Substation permit and easement is included in the interconnection agreement with CELSIA EPSA.

##### **4.4.2 TS-1.**

- Land owner (Family Victoria) of LTS-9 and LTS-10 requested change in the alignment. SeaOne accepted to analyze it and proceed with it if the change in a Giro Ordinario is accepted by the ANLA.
- Appraisal of the easement and towers/poles sites were mobilized to site and identifying potential existing infrastructure in the TL1 alignment.
- Easement negotiations will start once the appraisal of the easements has been completed.
- Easement negotiations scope of works is not included in CQS scope of works.

---

#### **4.5 PERMITING**

- Permit action tracking document is ongoing and weekly populated in order to identify all permits for the project.
- Permits weekly meeting is scheduled every Tuesday afternoon.
- It is pending to establish with Contractors and SeaOne the permits responsibility for each part.

#### **4.6 GERS - TRANSMISSION LINE (TL) AND POWER ELECTRICAL SUBSTATIONS (SE)**

##### **4.6.1 SE2 + LT2 + SE TABOR.**

- Engineering designs completed by GERS.

##### **4.6.2 SE1 + LT1 + SE SAN MARCOS 230kV.**

- Lidar Drone survey from LTS-5 to LTS-9A and Family Victoria Land was executed successfully on Oct 31<sup>st</sup>.
- SE San Marcos. Basic engineering designs are ongoing and deliverables are included in SeaOne's ftp site.
- Technical criteria for bay line engineering is pending to be received from ISA Intercolombia. Information requested on Oct 16<sup>th</sup>, Oct 26<sup>th</sup>, Oct 29<sup>th</sup> and Nov 5<sup>th</sup> with no answer.
- Soil studies for TL1.
  - TLS-1 to TLS-4, TLS-17 to TLS-21, TLS-22 to TLS-24. Completed and report received on Oct 29<sup>th</sup>.
  - To be scheduled on Nov 9<sup>th</sup> to 16<sup>th</sup>.
    - TLS-5 to TLS-9A. CC-SKC.
    - TLS-10. Victoria Family.
    - TLS-15 to TLS-16. Tala Family.
  - To be confirmed by the end of November 2020:
    - TLS-11 to TLS-12. Llano Family.
    - TLS-13 to TLS-14. Rodriguez Family.
- Reference deliverables for RFP EPC 230kV.
  - TL1. This activity has been delayed considering the changes in the alignment. It is ongoing.
  - SE SAN MARCOS. Technical exhibit of the Interconnection Agreement is required to continue with deliverables. 28 deliverables are included in the SeaOne's ftp site.

##### **4.7 RFP EPC 115kV (SE2 + LT2 + SE TABOR)**

- On Nov 6<sup>th</sup>, ME confirmed they will not submit proposal for the RFP EPC 115kV.
- Pending to confirm if IA Ingenieros Asociados will present proposal by the end of November 2020.
- On Nov 5<sup>th</sup>, JE Jaimes confirmed they will quote the RFP EPC 115kV but they will not include the piling foundations.
- Electricas de Medellin will quote the complete scope of works.

- On Nov 6<sup>th</sup>, SeaOne authorized to quote the piling foundations of the RFP EPC 115kV in a separate package.
- It is expected to receive proposals by the end of November 2020.
- On Nov 5<sup>th</sup>, ISA INTERCOLOMBIA was invited to bid the package as a BOOM contract. Pending if they are interested.

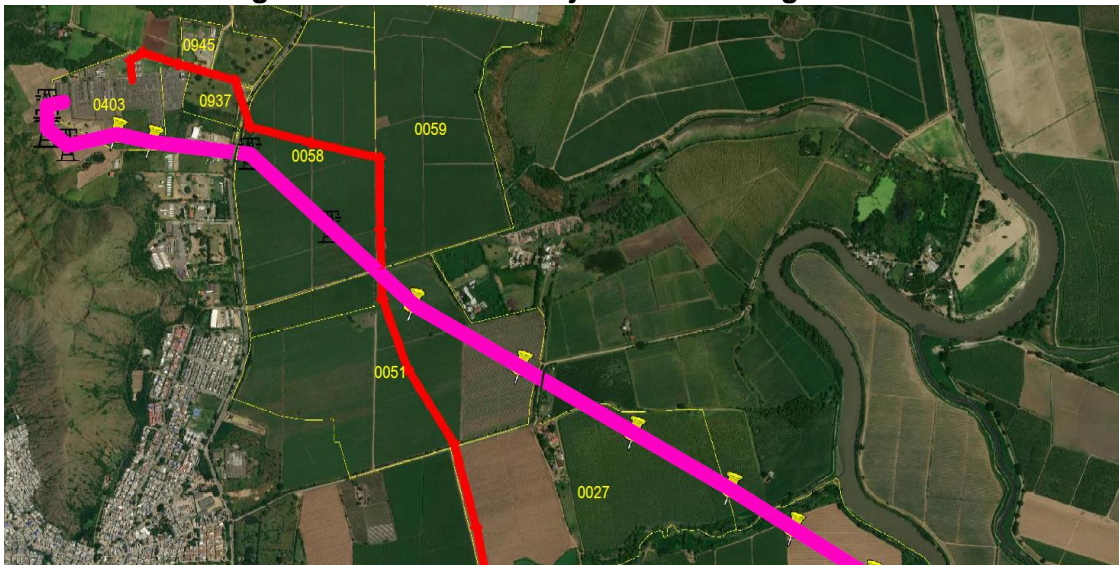
#### 4.8 RFP EPC 230kV (SE1 + LT1 + SE SAN MARCOS)

- On Nov 6<sup>th</sup>, ME confirmed they will not submit proposal for the RFP EPC 230kV.
- IA Ingenieros Asociados submitted proposal on Oct 15<sup>th</sup>.
- The soil studies results for the TLS-1 to TLS-4, TLS-17 to TLS-21, TLS-22 to TLS-24 are recommending piling foundations diameter 2.0m to 2.5m and length 8m to 10m. This could delay the construction timeline schedule.
- JE Jaimes is pending to confirm the submission date of its proposal.
- Electricas de Medellin requested a 50 days term to submit their proposal. It means in a close date to Nov 15<sup>th</sup>.
- The scope of work related to the demolition activities of existing infrastructure interfering with the TL1 is not included yet in the RFP. This is because of it is required a baseline as a result of the field easements appraisal activities.
- On Nov 3<sup>rd</sup>, a meeting was performed with SeaOne, Posse Herrera Ruiz lawyers and SUMED in order to discuss the EPC draft contract.

#### 4.9 GEB 500kV TRANSMISSION LINE ALFEREZ – SAN MARCOS PROJECT

- The 500kV transmission line Alferez – San Marcos Project is part of the UPME 04-2014 – Refuerzo Suroccidental Project. The Owner is GEB.
- Once defined and frozen the alignment in TL1, the GEB 500kV project crosses the TL1 in LTS-17 and LTS-18 sector, as presented in the following figures:

Figure 1. GEB 500kV Project and TL1 alignments



**Figure 2. GEB 500kV project crosses the TL1 in LTS-17 and LTS-18 sector**



- The GEB 500kV project has environmental license, easement legal imposition and will start construction on March 2021. This information needs to be confirmed.
- The GEB 500kV project should cross over TL1 because of RETIE standard.
- The GEB 500kV project towers should be higher enough to cross TL1.
- If GEB 500kV project install standard towers and if this type of structures are not high enough to cross TL1, this could block TL1 if technically it is not possible to cross under GEB 500kV TL.
- It is important to contact GEB in a written communication, in order to agree on coexistence of both projects. It is possible GEB could have the intention of request payment to SeaOne of the higher cost of GEB towers in the intersection sector.
- If an agreement is not reached with GEB, the construction strategy for TL1 should be secure easements, install a retention pole in LTS-16 and with the current LTS-19 retention pole, execute the foundations, poles installation and execute guard and phase conductor laying as a first priority for TL1 before GEB 500kV project start their cables laying. It will have an additional cost for SeaOne but will secure that TL1 will not be blocked by the GEB 500kV project.

#### **4.10 MOTA-ENGIL (ME) TS1 FACILITIES AND SUPPORT INFRASTRUCTURE**

- TS1 support infrastructure refers to 50kBLS sphere for LPG, 12kBLS water tank, trucks unloading bays, workshops, offices and other support infrastructure.
- The ME proposal has not been received. On Nov 6<sup>th</sup>, ME confirmed they will present a proposal by the next week.
- It is recommended to do a technical review of the ME technical proposal in order to identify missing gaps.
- Piling foundations could be required considering preliminary results on TL1 LTS-1 geotechnical studies.

---

#### **4.11 AQUA Y TERRA / AYT – ENVIRONMENTAL LICENSING**

##### **4.11.1 TS-2 Pole 7 to El Tabor Bay Line.**

- The EIA for the not licensed section of TL2 was submitted to EPA on Oct 19<sup>th</sup>.
- The preliminary settlement expenses is pending to be issued by the Financial Department of EPA. This payment is not required for the EIA submission. It will be required during the reviewing activity.
- SeaOne should be ready for the payment once the settlement expenses is defined by EPA in order to do the payment.
- It is pending to execute field archaeological activities. This activities are scheduled to be executed by the second week of December 2020.

##### **4.11.2 TS-1**

- AyT confirmed the adjusted EIA document is closed.
- It is pending to execute field archaeological activities. This activities are scheduled to be executed by the second week of December 2020.

#### **4.12 ISA INTERCONNECTION AGREEMENT**

- The Interconnection agreement was signed with ISA on Oct 19<sup>th</sup>.
- It is pending to receive the technical exhibit of the interconnection agreement. This information is required for the SE San Marcos bay line engineering designs.

#### **4.13 ISA BOOM (BUILD, OWN, OPERATE AND MANTAIN) PROPOSAL**

- This applies to the Termo Solo 1 13.8kV/230kV power electrical substation, transmission line 230kV and the bay line for the SE San Marcos.
- SUMED recommends to continue with the other bidders to obtain an EPC proposal and have more options for SeaOne decisions. The O&M contract could be included in a different package.
- ISA confirmed that in December 2020 could submit a proposal for the BOOM contract.

#### **4.14 DECEMBER, 2020 AUDITS REQUIREMENTS FOR TS-1 AND TS-2**

- Identify the milestones to be accomplished by the project for the next audit with XM.
- The interconnection agreement with ISA is completed.
- The basic engineering for TL1 and SE San Marcos should be 75% at least by November 2020. This milestone is completed for SE San Marcos but not for TL1.

#### **4.15 FREE TRADE ZONE CONTRACT**

- For the Puerto Solo Port, Termo Puerto Solo TS-2 and Termo Solo 1 TS-1 Free Trade Zone Contracts it is required to perform some architectural drawings for the Power Plants and the offices / DIAN buildings. It is a requirement to contract signature process.
- The Free Trade Zone Contract is required for the nationalization of all the imported equipment before the construction stage for the Puerto Solo Port, Termo Puerto Solo TS-2 and Termo Solo 1 TS-1.
- SeaOne confirmed the LNTP to ME is targeted to be submitted on November 2020, it is expected to include this activity in the LNTP works.

- Technical engineering works for this package are currently stopped.

#### **4.16 BACKWARD PLANNING. TS-1 AND TS-2**

- If Wartsila requires back feed from grid for Power Plant commissioning activities, a backward planning is required to integrate the schedules of the port, power plant, TLx and SEx.
- The planning should include the time line execution of the applicable procedure in CNO for the COD – Comercial Operation Date declaration established in the Acuerdo 1214 and the EACP – Estudio y Ajuste Coordinacion Protecciones regulation.